




PROPOSITION

# VENUE HIRE PACK

OUR BETHNAL GREEN SPACES

2026



**Human beings can create abundant biodiverse ecologies in the process of producing what we need to thrive**



# 100% of venue hire fees go to fund our charitable activities

Proposition's vision is a world where human beings create abundant biodiverse ecologies in the process of producing what we need to thrive. In order to bring this into reality people first need to believe it is possible.

We work with artists to communicate the enormous potential human beings have to create ecological resilience. We are gearing up to work with high impact industries to influence positive change on biodiversity.

Our programme includes gallery exhibitions, immersive exhibitions, performances, talks, artist residencies, farm tours and screenings.

We provide studios to hundreds of artists across London



# OUR BETHNAL GREEN SPACES

UNLEASHING PROPOSITION'S FULL POTENTIAL

# Proposition Bethnal Green

Situated just a stone's throw from Bethnal Green Underground station (Central Line) and 7 mins walk from Bethnal Green Overground Station (Weaver Line) our landmark detached 52,000sq ft site houses 88 artist studios, 3 galleries, a screening room/lecture hall, a performance venue with 300 capacity and a rooftop with panoramic views of the City of London and Canary Wharf - an incredible place to see the sunset.

## Features include:

- 20 car parking spaces/unit base in secure off-street yard
- Truck delivery access to yard from side-road
- Option of reception entrance or backstreet entrance
- Large glazed street fronting set-back from the pavement
- Directly opposite Bethnal Green Gardens
- Located between Whitechapel Gallery and Young V&A

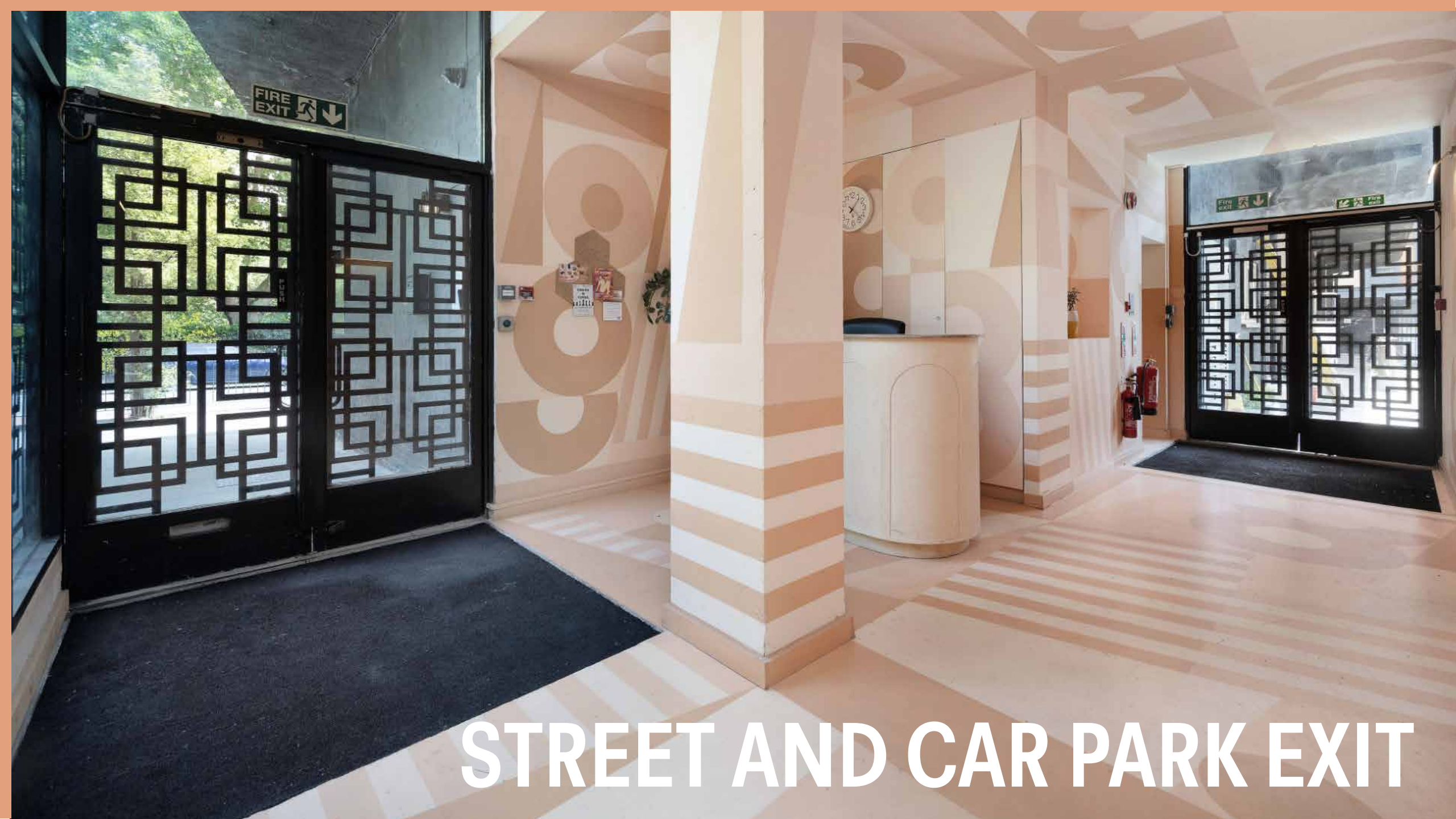
**Address:** Proposition Bethnal Green, 279 Cambridge Heath Rd, E2 0EL





**RECEPTION**

**STREET ENTRANCE**



**STREET AND CAR PARK EXIT**

A wide-angle photograph of a large, empty room. The room has a dark, polished floor that reflects the light. On the left and right sides, there are long, heavy red curtains that hang from the ceiling to the floor. At the far end of the room, there is a large, white, curved screen or wall. The ceiling is dark and features several circular recessed lights that are illuminated, casting a warm glow. The overall atmosphere is clean, modern, and professional.

# THE LODGE

UNLEASHING PROPOSITION'S FULL POTENTIAL

# The Lodge

Our dedicated event's venue offers a private bar, raised stage, private entry and has everything you need to host your event. Whether it's a conference or TED talk during the day to late night live music events, private parties or product launches.

## Features include:

- 22x7.8m room with ceiling height of 3.9m
- Large bar area with extensive shelving and LED's
- Direct access from the yard into the venue doors
- 32amp and 13amp sockets on the stage & 16amp on beams
- 3m high red velvet curtains, drawn or closed
- Optional independent access from side gate
- 5 toilets, M, F, gender neutral and accessible
- Back of house storage area with immediate access
- LED mood lighting in RGB+W and halo ceiling lights

## Capacity:

Standing Music Event - 300

Private Party - 260

Standing Reception - 200

Seated Conference - 120

Cabaret Style Seating - 80



# The Lodge Pricing

## **TIER 1 – £105 per hour, 4 Hours Minimum:**

- (8am-7pm) plus £80 cleaning fee
- Private venue with separate entrance + yard access
- Underfloor heating
- Private bar + stage
- 5 toilets (incl. accessible + gender neutral)
- Vivetek D867 Projector and speakers + screen + HDMI Cable and adapters
- 2 X Vintage Sofas, 1 x Vintage Chair
- 50 Chairs available.
- 12 Square Tables Available
- Wifi
- Coat Rail and Hangers
- 2 x Parking Spots
- External Catering allowed

## **TIER 2 – £160 per hour + £80 Cleaning fee 4 Hours Minimum:**

- Everything in Tier 1 Plus:
- Dedicated Duty Manager
- Event ready set up from our predetermined furniture list
- Access to PA system, and live Mixer throughout your booking
- +2 additional Car parking spots.

### **Available upon request:**

- Additional 50 Chairs
- Extra Tables
- PA system and live mixer
- Extension leads

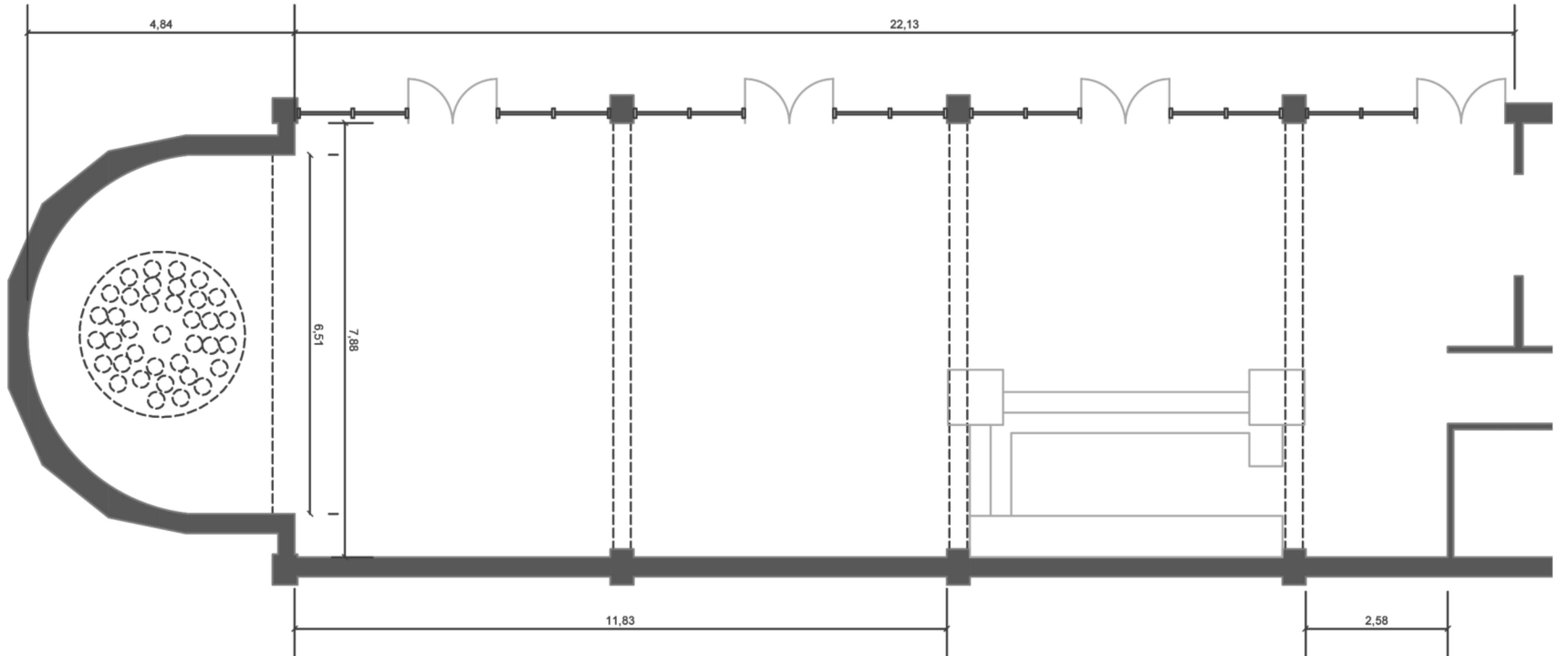
### **Optional paid extras:**

- Sound Technician - £65/h
- Security Team – £25/h per 100 guests
- Greeting and Cloakroom staff - £19/h
- Bar Setup and Services - £1800 minimum spend
- Daytime and evening refreshment packages available



- Ceiling height: 3.93
- Bar dimensions: 5.6(W)x2.7(D)x3(H)m

- Stage Platform HeightL 1.05m
- Stage ceiling clearance: 2.86m





# SKYLIGHT GALLERY

UNLEASHING PROPOSITION'S FULL POTENTIAL

# Skylight Gallery

The Skylight Gallery is a very versatile high-end gallery space which can accommodate events such as art exhibitions, indoor markets, music recitals, dance or drama performances, private parties, drinks receptions, product launches. With a grand piano in situ it is perfect for piano practice or recitals

## Features include:

- 18x7.2m room with ceiling height of 4m
- Concrete floor
- Grand piano in-situ (can be removed)
- Adaptable elbow gallery spotlights
- Separate entrance from reception
- Ramp access immediately from the yard
- 4 skylights flooding the room with natural light
- 240v power sockets at either end of the gallery

## Capacity:

Standing - 120



# Skylight Gallery Pricing

## **TIER 1 – £85p/h 4 Hours Minimum plus £60 Cleaning fee:**

- Well lit ground floor space
- Easy access from main reception for guests and loading access directly from our private yard
- 13amp sockets throughout space
- Wifi
- 2x Parking Spots
- Adjustable and dimmable spot lights
- External Catering allowed
- Toilets available on ground floor

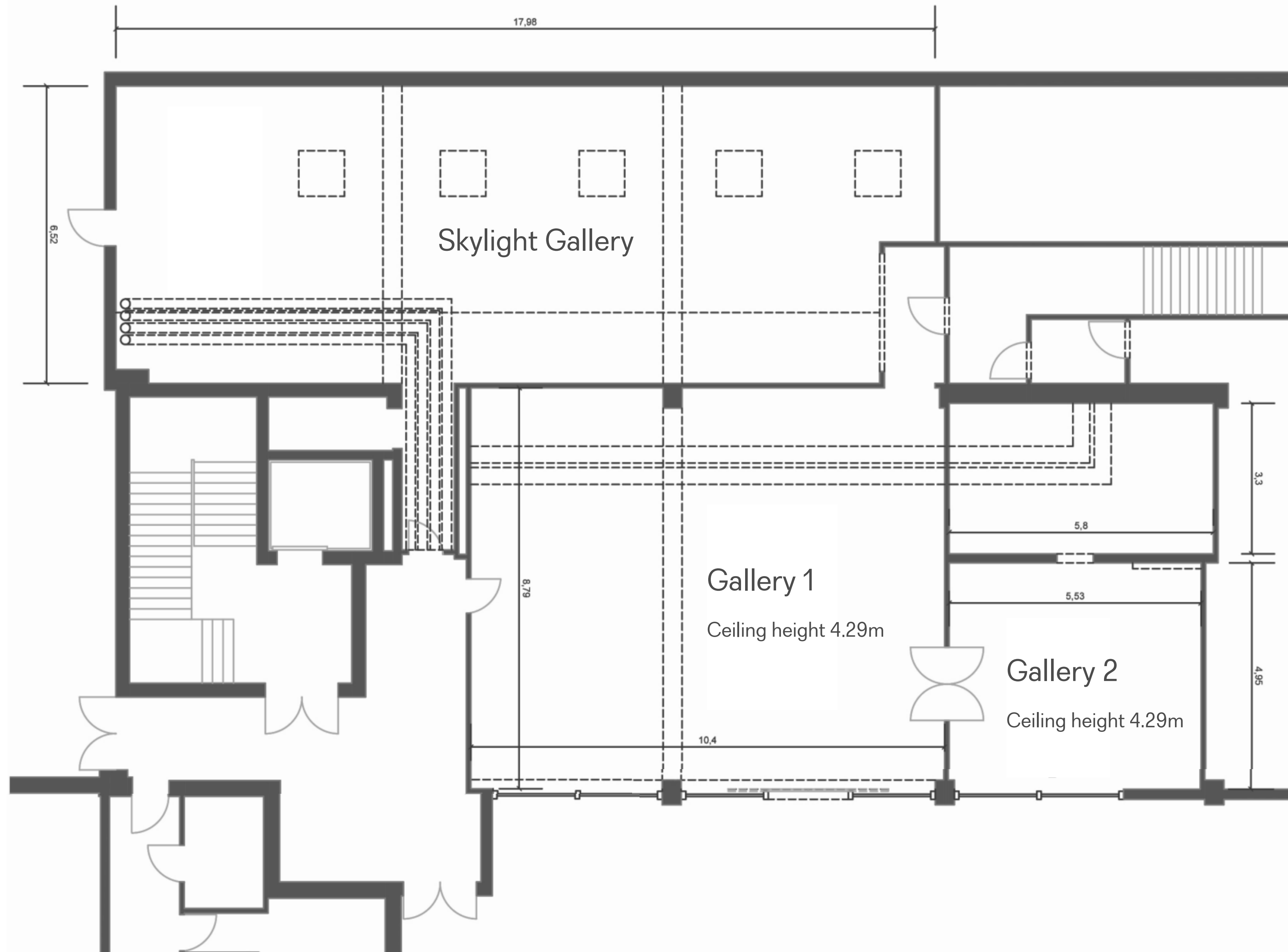
## **TIER 2 – £140 per hour + £60 Cleaning fee 4 Hours Minimum:**

- Everything in Tier 1
- Dedicated Duty Manager
- Event ready set up from our predetermined equipment list
- Access to PA system, and live Mixer throughout your booking
- +2 additional Car parking spots

### **Available upon request:**

- Additional 50 Chairs
- Extra Tables
- PA system and live mixer
- Extension leads





A monochromatic blue room with rows of chairs and two armchairs. The room is entirely blue, including the walls, floor, and furniture. There are several rows of blue chairs with metal frames, and two blue armchairs on the right side. A window with blue curtains is visible in the background. The lighting is soft and even, creating a calm and minimalist atmosphere.

# THE BLUE ROOM

UNLEASHING PROPOSITION'S FULL POTENTIAL

# The Blue Room

Our Lecture Hall and Screening Room is affectionately known as the 'Blue Room' for its charming ambiance and completely blue walls, ceiling floor and velvet curtains. Equipped with a 4k projector, 180 inch projector screen,, lectern and blackout curtains our Lecture Hall can help whatever you want to show sing. The room can be completely cleared to suit your requirements and is then suitable for use for rehearsals.

## Features include:

- 9x6m room with ceiling height of 4.3m
- Horizon Ultra 4k projector
- 180inch projector screen
- 50 soft seat blue chairs
- Blackout blue curtains
- Blue Lectern
- Windows at street level for visibility + natural light
- 13amp power sockets

## Capacity:

Seated - 50

Standing - 60



# The Blue Room Pricing

## **TIER 1 – £65p/h plus £30 Cleaning fee:**

- Self-managed access via our main reception area
- Fitted out Cinema Space and equipment
- Toilets available on Level 1
- 2x Carpark Spots
- Access to Yard for loading and unloading
- Wifi

## **TIER 2 – £105 per hour plus £30 Cleaning fee:**

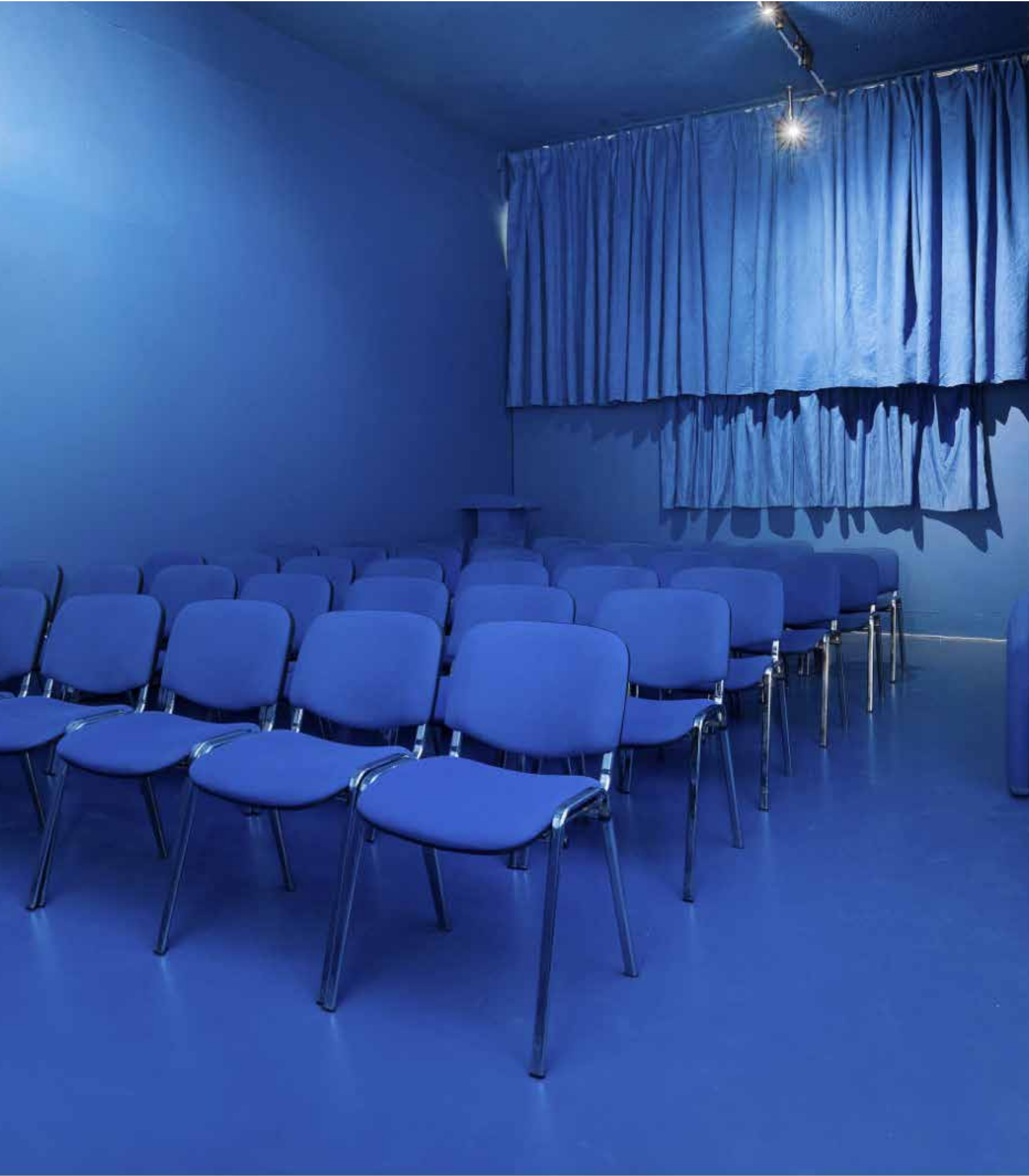
- Everything in Tier 1
- Dedicated Duty Manager for your event with meet and greet
- Event ready set up from our predetermined equipment list
- Access to PA system, and live Mixer throughout your booking
- +2 additional Car parking spots

## **Available upon request:**

- Extra Tables
- PA system and live mixer
- Extension leads

## **Optional paid extras:**

- Sound Technician - £65/h



# SUNSET ROOFTOP

UNLEASHING PROPOSITION'S FULL POTENTIAL

# Sunset Rooftop

Exclusive and unique panoramic views of the City of London to the west and Canary Wharf to the East and overlooking the canopy of the trees in Bethnal Green Gardens, this sunset or sunrise location has the potential to remain in your guests or viewers memories for years to come.

## Features include:

- 5,000 sq ft of rooftop space
- Panoramic views over The City of London and Canary Wharf
- Sunrise and sunset views are stunning
- Overlooking Bethnal Green Gardens on one side and Canary Wharf and City Skyline on the other
- Rooftop of a 5 storey building
- Underpartial cover from rain and the elements
- Parapet wall of 5ft around the perimeter
- Two fire exit stairwells



# Sunset Rooftop

## **TIER 1 – £100 per hour:**

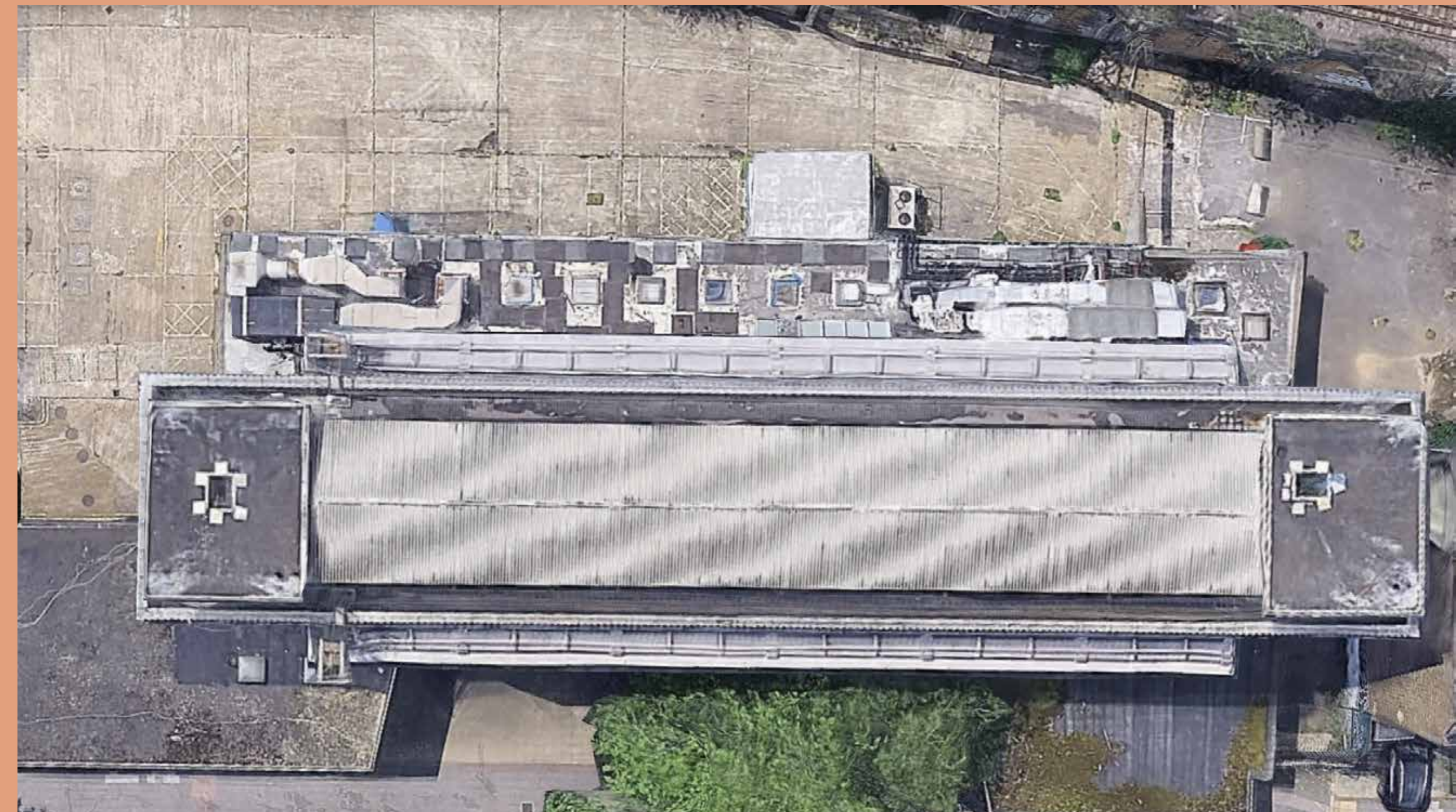
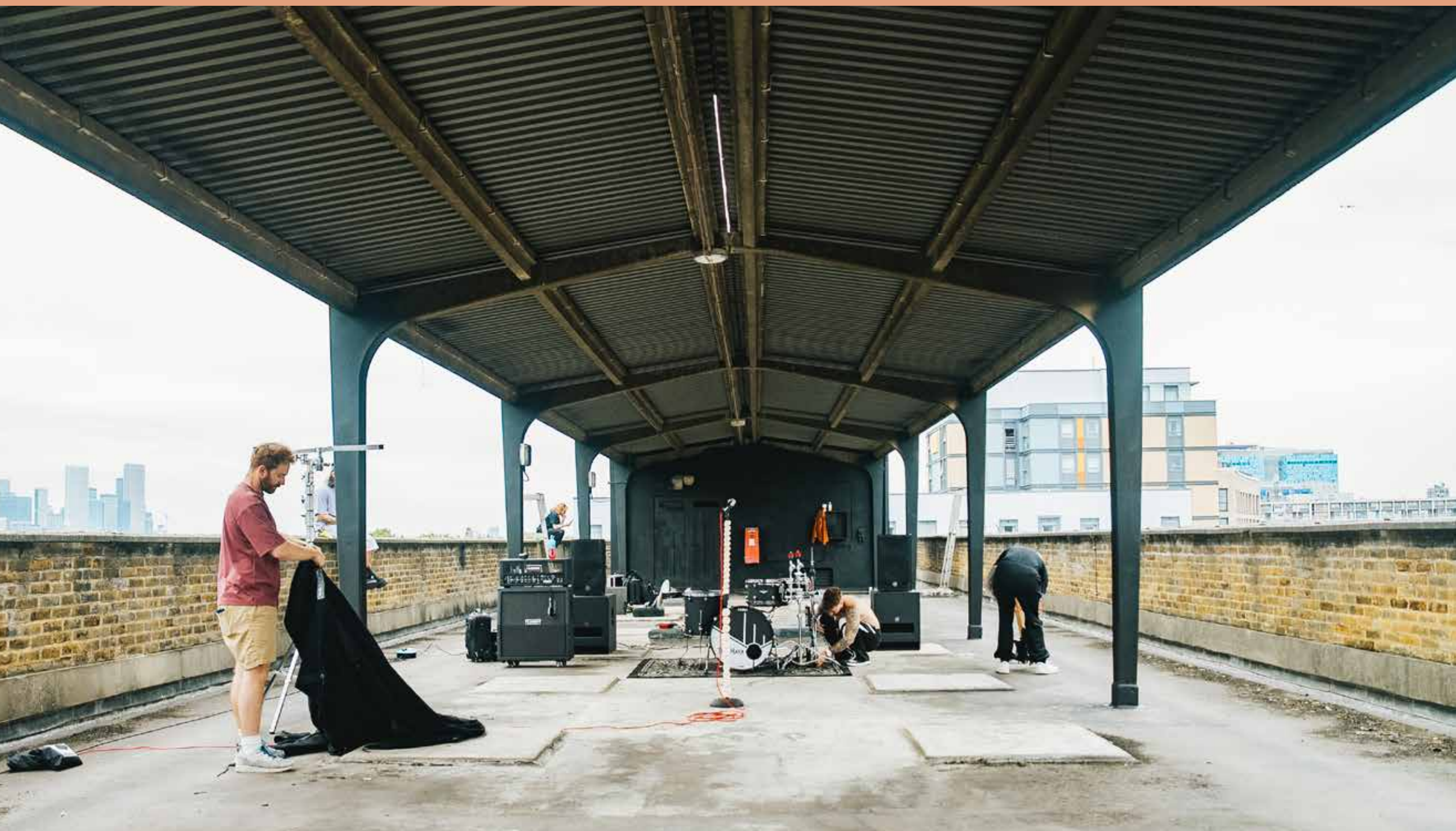
- Self-managed access via our main reception area
- Yard access for loading and Unloading
- 2x Carpark Spots
- Unisex Toilets on Level 4

## **TIER 2 – £125 per hour:**

- Everything in Tier 1
- Dedicated Duty Manager for your event with meet and greet
- +2 additional Car parking spots

## **Available upon request:**

- Chairs and Tables
- Extension leads





# THE STAGE VENUE

## PHYSICAL ARTS - STUDIO 1

UNLEASHING PROPOSITION'S FULL POTENTIAL

# Physical Arts - Studio 1

Studio 1 is the perfect hire space for aerial acrobatics, silks, sports, gymnastics, martial arts, calisthenics or wrestling events or courses. Housed within our Physical Arts block, operated by Waking Dreams, it is a location attended by many fitness and wellness enthusiasts.

## Features include:

- 15.5x7.2m room with ceiling height of 5m
- Ramp access from the yard
- Seperate entrance from Birkbeck st with private reception
- Aerial rigging apparatus with 6 ceiling fixing points
- Ropes from aerial can be stowed
- Completely matted floor with highest grade martial arts mats
- Mats can be stored away using mat trolley
- Crash mats stored on site
- Showers and lockers
- Access to sauna and ice baths in the garden
- 13amp power sockets at either end of the studio

**Pricing and Availability on POA**







# PHYSICAL ARTS - STUDIO 2

UNLEASHING PROPOSITION'S FULL POTENTIAL

# Physical Arts - Studio 2

Studio 2 is the perfect hire space for dance or drama classes and rehearsals. Housed within our Physical Arts block, operated by Waking Dreams, it is a location attended by many dancers, fitness and wellness

## Features include:

- 9.5x5.6m room with ceiling height of 3m
- Sprung wooden floor
- Full height mirrors covering one wall
- Beams with the potential to strop silks or other apparatus
- Dance support bars on both sides of the room
- Private entrance
- Showers and lockers
- Access to sauna and ice baths in the garden
- Seperate entrance from Birkbeck st with private reception
- Flooded with natural light
- 13amp power sockets at either end of the studio

**Pricing and availability on POA**





Yard ramp access

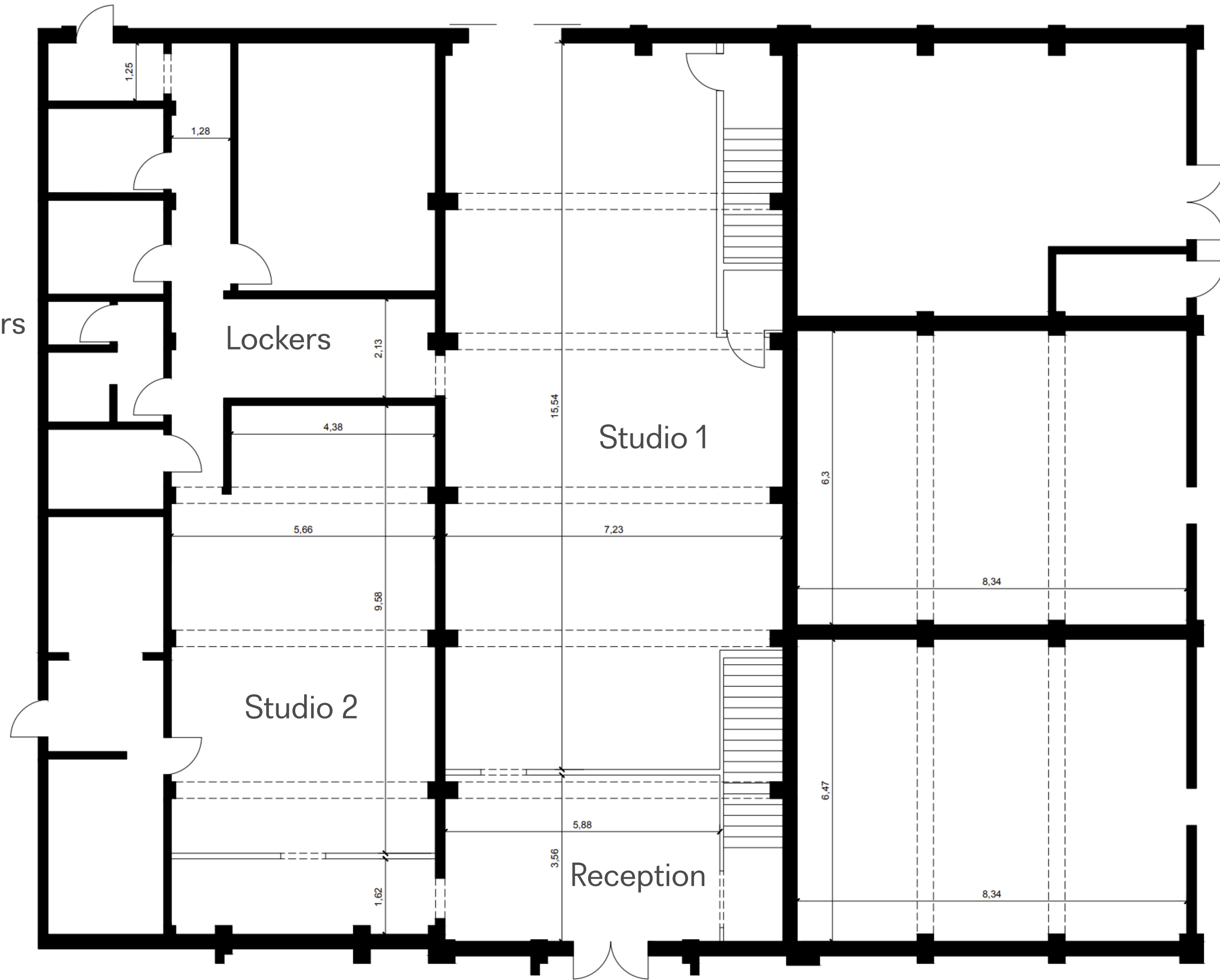
Showers

Lockers

Studio 1

Studio 2

Reception





# Hospitality - Daytime

## Half-Day package 13.50 p.p

### Arrival

Freshly Baked Pastries, Orange Juice  
Tea & Coffee

### Mid- Morning Refreshments

Organic Tea & Freshly Brewed Coffee,  
Biscuits

### Throughout

Still & Sparkling Water

## Daytime refreshments

Organic Tea & Freshly Brewed Coffee, Biscuits 3.00 p.p  
Fresh Pastries Selection 4.00 p.p  
Still & Sparkling water 750ml 3.50 each  
Fresh Orange Juice 1L 8.50 each

## Half-Day package 23.50 p.p

### Arrival

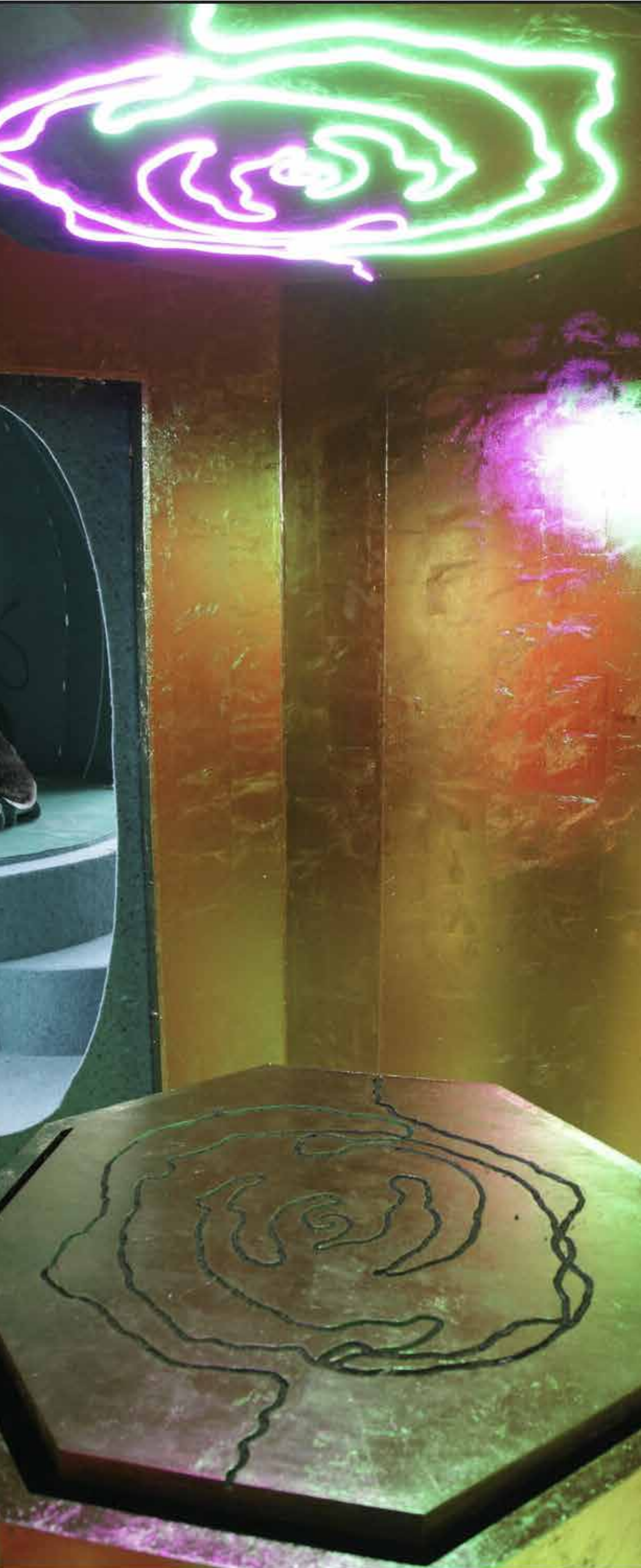
Freshly Baked Pastries, Orange Juice  
Tea & Coffee  
Additional Refreshments  
Organic Tea & Freshly Brewed Coffee,  
Biscuits

### Lunch

Selection of Wraps & Sandwiches  
Orange Juice

### Throughout

Still & Sparkling Water, Fresh Fruit



# Hospitality - Evening

**Evening Hire – Any Alcohol service needs to be provided by the venue in line with our licensing requirements. We offer a variety of options as well as a bespoke service.**

**For Food options we can provide a selection of approved suppliers.**

## Standing Reception Package

Includes unlimited wine, beer & soft drinks.

Glassware and service included

ONE HOUR 19.50 per person

TWO HOUR 27.00 per person

THREE HOUR 34.00 per person

## Pay as you go

Bar setup and available for during of event. Guests pay for on drinks.

Bar-Tab

A pre-arrange bar tab and drink range, for guests to choose from on the night.

Subject to setup fees depending on numbers and event length. For our full menu and more details please contact our events team.

\*all prices are inclusive of VAT

# FAQ's

## **PARKING**

Secure parking as well as over night stay is available. Our yard also offers direct loading access to our spaces. Subject to availability.

## **SECURITY**

For evening events and events serving alcohol, we are required by our license to have a member of security.

## **AUDIO VISUAL**

We can provide basic Audio Visual equipment for your event. For larger events we can arrange for equipment hire. Please speak with our events team for more details

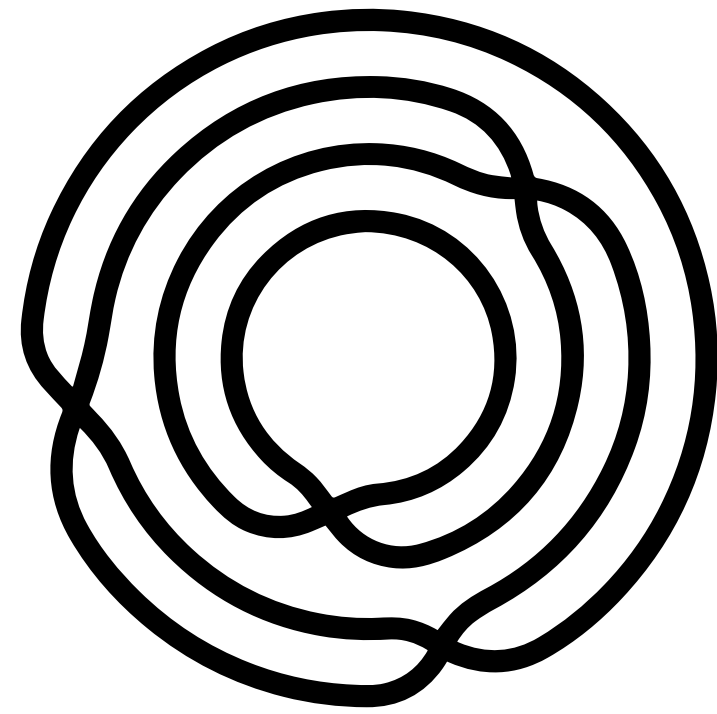
## **TICKETED MUSIC EVENTS**

Yes you can promote & host your own ticketed events in our spaces, and we are actively seeking Promoter partnerships. Please reach out to us for more information.

## **FILMING**

Our spaces are all available for Film hire. We offer a wide variety of spaces across multiple London sites, including our Wembley Film studio and some secret locations we don't advertise. So do get in touch with our Film & Production team at [rebecca@propositionstudios.com](mailto:rebecca@propositionstudios.com)





# **PROPOSITION**

**ENQUIRY@PROPOSITIONSTUDIOS.COM**

**REBECCA@PROPOSITIONSTUDIOS.COM**

**OWEN@PROPOSITIONSTUDIOS.COM**